



# 2013 Florida County Profiles

## Charlotte

Population by Age Category		
All Ages	163,679	100.0%
Under 60	91,811	56.1%
60+	71,868	43.9%
65+	56,976	34.8%
70+	40,846	25.0%
75+	26,759	16.3%
80+	15,940	9.7%
85+	7,429	4.5%

Population by Race (60+)		
White	69,254	96.4%
Non-White	3,374	4.7%
Black	2,708	3.8%
Other Minorities	666	0.9%

Population by Ethnicity (60+)		
Total Hispanic	1,774	2.5%
White	1,594	2.2%
Non-White	180	0.3%
Total Non-Hispanic	70,094	97.5%
Total Minorities <sup>1</sup>	4,208	5.9%

Population by Gender (60+)		
Population 60+	71,868	43.9%
Male	33,098	46.1%
Female	38,770	53.9%

Financial Status (60+, % 60+)		
Below Poverty Guideline	4,801	6.7%
Below 125% of Poverty Guideline	7,438	10.3%
Minorities Below Poverty Guideline	729	1.0%
Minorities Below 125% of Poverty Guideline	926	1.3%

Medically Underserved (65+)		
Total Medically Underserved	15,596	
Medically Underserved Populations - Living in Areas Defined as Having Medically Underserved Populations	15,596	
Medically Underserved Areas - Living in Medically Underserved Areas	0	

Living Situation (60+)		
Living Alone	14,245	
Male	4,481	
Female	9,764	

Grandparents (60+)	
Total 60+ Living With Own Grandchildren (Under Age 18)	1,170
Grandparent Responsible for Own Grandchildren (Under Age 18)	491
Grandparent Not Responsible for Own Grandchildren (Under Age 18)	679
60+ Not Living With Own Grandchildren (Under Age 18)	69,574

Skilled Nursing Facility Utilization	
SNF Beds	1,228
Community Beds	1,108
Sheltered Beds	0
Veterans Administration Beds	120
Other Beds	0
SNFs With Beds	10
Community Beds	9
Sheltered Beds	0
Veterans Administration Beds	1
Other Beds	0
SNFs With Community Beds	9
Community Bed Days	404,420
Community Patient Days	341,335
Medicaid Patient Days	189,699
Occupancy Rate	84.4%
Percent Medicaid	55.6%

Adult Day Care	
Facilities	2
Capacity	106

Adult Family Care Homes	
Homes	21
Beds	87

Home Health Agencies	
Agencies	20
Medicaid Certified Agencies	1
Medicare Certified Agencies	13

Homemaker & Companion Service Companies	
Companies	12

Ambulatory Surgical Centers	
Facilities	6
Operating Rooms	12
Recovery Beds	29



# 2013 Florida County Profiles

## Charlotte (Continued)

Rural Designation	
Rural (Yes/No)	NO

Assisted Living Facilities	
Total Beds	720
OSS Beds <sup>2</sup>	0
Non-OSS Beds	720
Total Facilities	13
Facilities With ECC License <sup>3</sup>	3
Facilities With LMH License <sup>4</sup>	1
Facilities With LNS License <sup>5</sup>	5

Hospitals	
Hospitals	3
Hospitals With Skilled Nursing Units	0
Hospital Beds	699
Skilled Nursing Unit Beds	0

Medical Professionals	
Medical Doctors	
Licensed	301
Limited License	0
Critical Need Area License	0
Restricted	0
Medical Faculty Certificate	0
Public Health Certificate	0
Specialties	
Licensed Podiatric Physicians	12
Licensed Osteopathic Physicians	34
Licensed Chiropractic Physicians	31
Registered Nurses	
Licensed Registered Nurses	2,212

Driver's License	
Drivers With Florida Driver's License - All Ages	135,900
Drivers With Florida Driver's License - Age 60+	64,563
Percent of Drivers With Florida Driver's License - Age 60+	47.5%

Food Stamps (60+)	
Participants (60+)	2,175
Potentially Eligible	7,438
Food Stamp Participation Rate (60+)	29.2%

Registered Voters	
Registered to Vote in Florida - All Ages	116,360
Registered to Vote in Florida - Age 60+	62,186
Percent of Population Registered to Vote in Florida - Age 60+	53.4%

Households With Cost Burden Above 30% and Income Below 50% Area Median Income (65+) (2010)	
Elder Households	35,302
Percent of All Households	11.9%

Median Household Income (All Ages)	
2008-2012	\$44,596

Medicaid & Medicare Eligibility	
Medicaid Eligible - All Ages	20,989
Medicaid Eligible - 60+	3,608
Dual Eligible - All Ages	5,266
Dual Eligible - 60+	3,324

Veterans	
Total	17,687
Age 45-64	5,145
Age 65-84	10,547
Age 85+	1,995

Disability Status (60+)	
With One Type of Disability <sup>6</sup>	11,335
Hearing	9,596
Vision	3,782
Cognitive	4,983
Ambulatory	12,171
Self-Care	3,610
Independent Living	6,556
With Two or More Disabilities	9,909
With No Disabilities	50,696
Probable Alzheimer's Cases <sup>7</sup>	6,979

English Proficiency (60+)	
With Limited English Proficiency	841

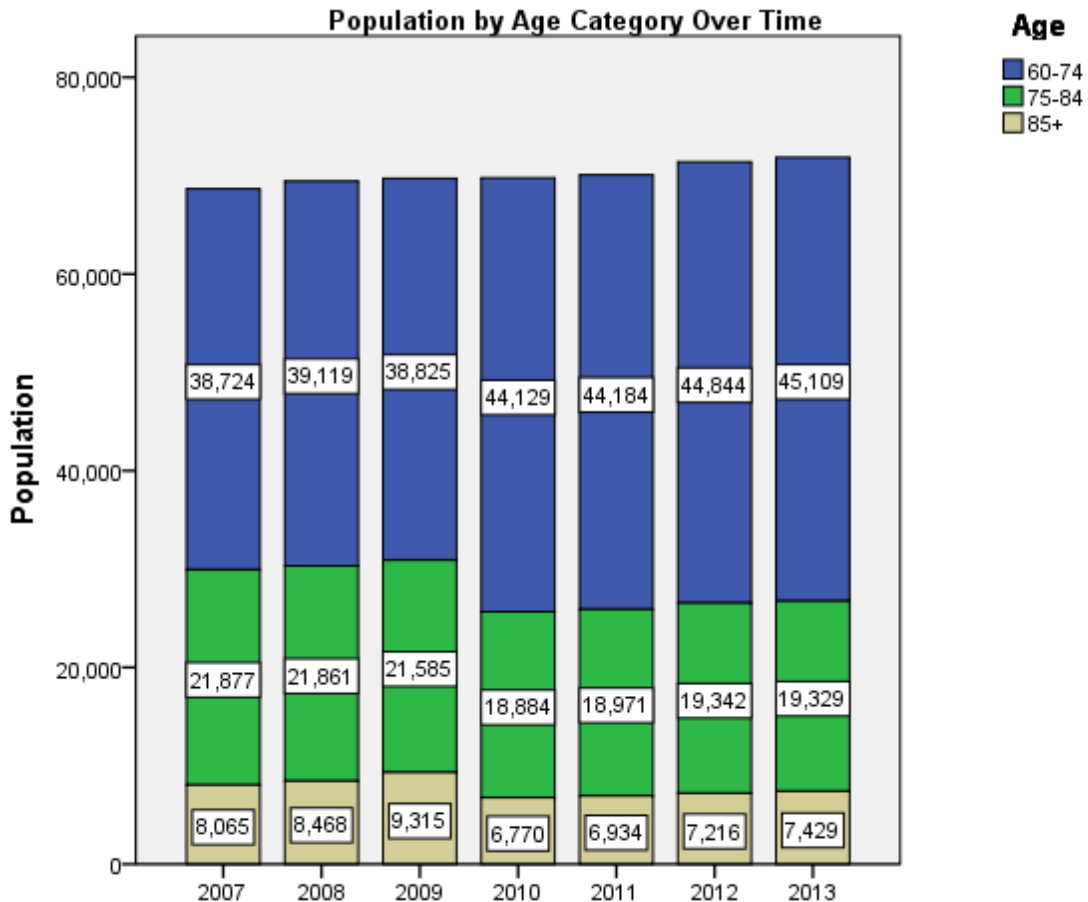
# 2013 Florida County Profiles

## Charlotte (Continued)

Cost of Living	
	Annual Expenses <sup>8</sup>
<b>Single Elders</b>	
Owner without Mortgage	\$18,648
Renter, one bedroom	\$21,684
Owner with Mortgage	\$27,648
<b>Elder Couple</b>	
Owner without Mortgage	\$28,200
Renter, one bedroom	\$31,236
Owner with Mortgage	\$37,200

Note: Wider Opportunities for Women Elder Economic Security Standard™ Index (Elder Index) measures how much income retired older adults require to meet their basic needs—without public or private assistance. The Elder Index measures basic expenses for elders age 65+ living in the community, not in institutions.

Useful Websites
<a href="#">County Chronic Disease Profile (Charlotte)</a>
<a href="#">Florida Housing Data Clearinghouse (Charlotte)</a>
<a href="#">Behavioral Risk Factors (BRFSS) (Charlotte)</a>





# 2013 Florida County Profiles

---

<sup>1</sup> Total Minorities = (60+ Population) – (White Non-Hispanic 60+)

<sup>2</sup> OSS beds: Optional State Supplementation beds

<sup>3</sup> ECC License: Extended Congregate Care License

<sup>4</sup> LMH License: Limited Mental Health License

<sup>5</sup> LNS License: Limited Nursing Services License

<sup>6</sup> With One Type of Disability: 60+ people who have only one type of disability

<sup>7</sup> Probable Alzheimer's Cases = (65-74 Population x 0.0136) + (75-84 Population x 0.1822) + (85+ Population x 0.4098)

<sup>8</sup> Annual expenses include: housing, including utilities, taxes, insurance; food; transportation; health care, based on good health; and miscellaneous.

## Sources

- Population: Florida Population by County, Age, Race, Ethnicity and Gender provided by Florida Legislature, Office of Economic and Demographic Research
- Financial Status & Living Situation: Department of Elder Affairs calculations based on Florida Population data and 2007-2011 American Community Survey
- Medically Underserved Population (Data as of 7/18/2014): Florida Department of Health and U.S. Department of Health and Human Services
- Grandparents: Department of Elder Affairs calculations based on Florida Population data and 2007-2011 American Community Survey, Special Tabulation on Aging
- Skilled Nursing Facility Utilization, Adult Day Care, Adult Family Care Home, Ambulatory Surgical Centers, Assisted Living Facilities, Home Health Agencies, Homemakers & Companion Service Companies, Hospitals: Florida Agency for Health Care Administration
- Rural Designation: Based on the definition of Rural Designation by Rural Economic Development Initiative
- Medical Professionals: Florida Department of Health
- Driver's License: Florida Department of Highway Safety & Motor Vehicles
- Food Stamps: Florida Department of Children and Families
- Registered Voters (Data as of 1/31/2014) : Florida Department of State
- Households with Cost Burden Above 30% and income below 50% Area Median Income: The Shimberg Center for Housing Studies
- Median Household Incomes: U.S. Census Bureau: State and County QuickFacts
- Medicaid & Medicare Eligibility and Medicaid Eligibility: Florida Agency for Health Care Administration
- Veterans Demographics: Florida Department of Veterans' Affairs
- Disability Status: Department of Elder Affairs calculations based on Florida Population data and 2009-2011 American Community Survey Data
- Probable Alzheimer's Cases: Department of Elder Affairs calculations based on Florida Population data and Alzheimer's by Age in 2011 Alzheimer's Disease Facts and Figures report at [http://www.alz.org/documents\\_custom/Facts\\_2011/ALZ\\_FL.pdf?type=interior\\_map&facts=undefined&facts=facts](http://www.alz.org/documents_custom/Facts_2011/ALZ_FL.pdf?type=interior_map&facts=undefined&facts=facts)
- English Proficiency: Department of Elder Affairs calculations based on Florida Population data and 2007-2011 American Community Survey, Special Tabulation on Aging
- Cost of Living (Data as of 7/18/2014): Wider Opportunities for Women Elder Economic Security Standard™ Index (Elder Index) at <http://www.basiceconomicsecurity.org/EI/>