



2013 Florida County Profiles

Brevard

Population by Age Category		
All Ages	548,424	100.0%
Under 60	394,304	71.9%
60+	154,120	28.1%
65+	115,880	21.1%
70+	82,448	15.0%
75+	54,991	10.0%
80+	33,241	6.1%
85+	15,794	2.9%

Population by Race (60+)		
White	140,431	91.1%
Non-White	13,562	8.8%
Black	10,560	6.9%
Other Minorities	3,002	1.9%

Population by Ethnicity (60+)		
Total Hispanic	6,832	4.4%
White	6,010	3.9%
Non-White	822	0.5%
Total Non-Hispanic	147,288	95.6%
Total Minorities ¹	19,699	12.8%

Population by Gender (60+)		
Population 60+	154,120	28.1%
Male	70,940	46.0%
Female	83,180	54.0%

Financial Status (60+, % 60+)		
Below Poverty Guideline	11,206	7.3%
Below 125% of Poverty Guideline	17,753	11.5%
Minorities Below Poverty Guideline	2,521	1.6%
Minorities Below 125% of Poverty Guideline	3,793	2.5%

Medically Underserved (65+)		
Total Medically Underserved	32,899	
Medically Underserved Populations - Living in Areas Defined as Having Medically Underserved Populations	32,899	
Medically Underserved Areas - Living in Medically Underserved Areas	0	

Living Situation (60+)		
Living Alone	36,874	
Male	11,923	
Female	24,951	

Grandparents (60+)	
Total 60+ Living With Own Grandchildren (Under Age 18)	5,575
Grandparent Responsible for Own Grandchildren (Under Age 18)	1,856
Grandparent Not Responsible for Own Grandchildren (Under Age 18)	3,724
60+ Not Living With Own Grandchildren (Under Age 18)	145,547

Skilled Nursing Facility Utilization	
SNF Beds	2,629
Community Beds	2,629
Sheltered Beds	0
Veterans Administration Beds	0
Other Beds	0
SNFs With Beds	20
Community Beds	20
Sheltered Beds	0
Veterans Administration Beds	0
Other Beds	0
SNFs With Community Beds	20
Community Bed Days	959,585
Community Patient Days	842,254
Medicaid Patient Days	459,344
Occupancy Rate	87.8%
Percent Medicaid	54.5%

Adult Day Care	
Facilities	9
Capacity	539

Adult Family Care Homes	
Homes	16
Beds	74

Home Health Agencies	
Agencies	40
Medicaid Certified Agencies	12
Medicare Certified Agencies	30

Homemaker & Companion Service Companies	
Companies	37

Ambulatory Surgical Centers	
Facilities	19
Operating Rooms	46
Recovery Beds	122



2013 Florida County Profiles

Brevard (Continued)

Rural Designation	
Rural (Yes/No)	NO

Assisted Living Facilities	
Total Beds	2,769
OSS Beds ²	205
Non-OSS Beds	2,564
Total Facilities	122
Facilities With ECC License ³	13
Facilities With LMH License ⁴	6
Facilities With LNS License ⁵	33

Hospitals	
Hospitals	11
Hospitals With Skilled Nursing Units	0
Hospital Beds	1,829
Skilled Nursing Unit Beds	0

Medical Professionals	
Medical Doctors	
Licensed	1,222
Limited License	1
Critical Need Area License	7
Restricted	0
Medical Faculty Certificate	0
Public Health Certificate	0
Specialties	
Licensed Podiatric Physicians	31
Licensed Osteopathic Physicians	117
Licensed Chiropractic Physicians	137
Registered Nurses	
Licensed Registered Nurses	7,336

Driver's License	
Drivers With Florida Driver's License - All Ages	455,253
Drivers With Florida Driver's License - Age 60+	147,329
Percent of Drivers With Florida Driver's License - Age 60+	32.4%

Food Stamps (60+)	
Participants (60+)	6,756
Potentially Eligible	17,753
Food Stamp Participation Rate (60+)	38.1%

Registered Voters	
Registered to Vote in Florida - All Ages	371,079
Registered to Vote in Florida - Age 60+	134,083
Percent of Population Registered to Vote in Florida - Age 60+	36.1%

Households With Cost Burden Above 30% and Income Below 50% Area Median Income (65+) (2010)	
Elder Households	76,179
Percent of All Households	14.0%

Median Household Income (All Ages)	
2008-2012	\$49,099

Medicaid & Medicare Eligibility	
Medicaid Eligible - All Ages	80,656
Medicaid Eligible - 60+	11,219
Dual Eligible - All Ages	16,347
Dual Eligible - 60+	10,136

Veterans	
Total	54,220
Age 45-64	24,346
Age 65-84	24,843
Age 85+	5,031

Disability Status (60+)	
With One Type of Disability ⁶	24,209
Hearing	19,072
Vision	8,626
Cognitive	12,483
Ambulatory	30,253
Self-Care	9,010
Independent Living	17,503
With Two or More Disabilities	24,220
With No Disabilities	105,910
Probable Alzheimer's Cases ⁷	14,446

English Proficiency (60+)	
With Limited English Proficiency	2,539

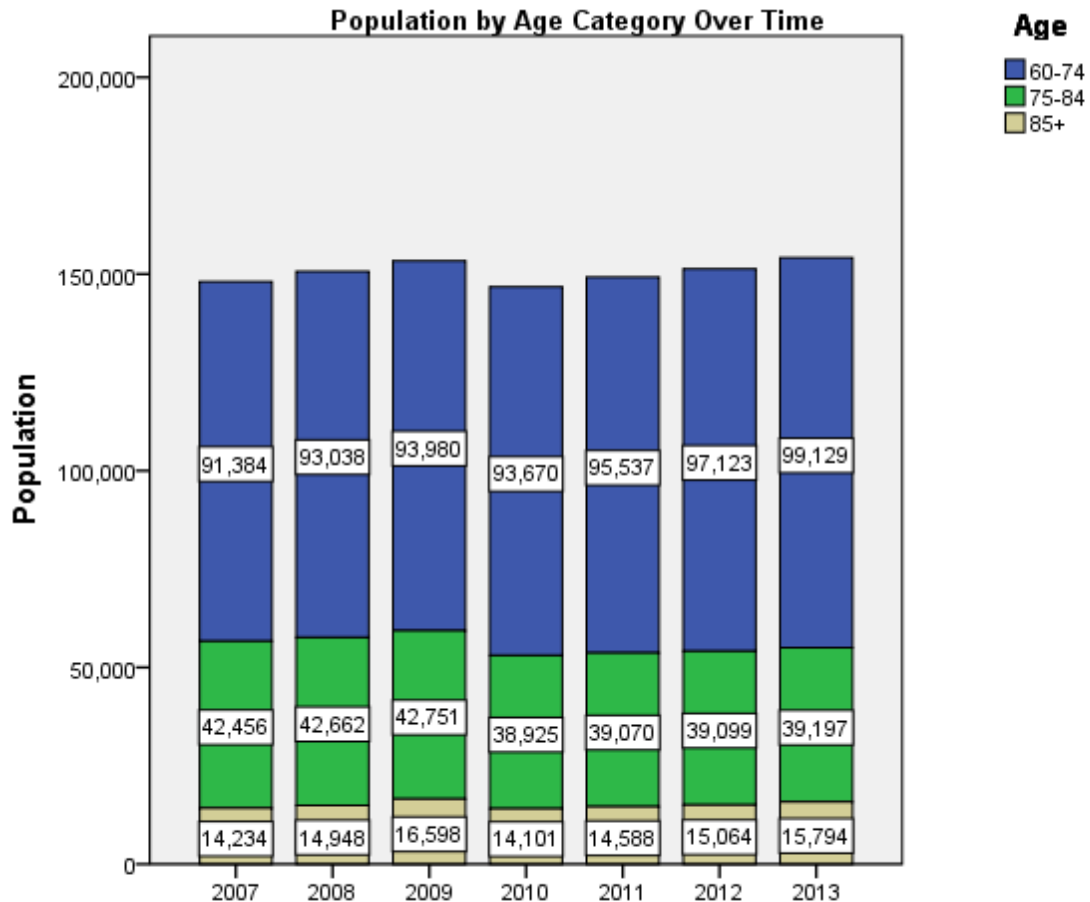
2013 Florida County Profiles

Brevard (Continued)

Cost of Living	
	Annual Expenses ⁸
Single Elders	
Owner without Mortgage	\$19,452
Renter, one bedroom	\$23,772
Owner with Mortgage	\$28,872
Elder Couple	
Owner without Mortgage	\$30,432
Renter, one bedroom	\$34,752
Owner with Mortgage	\$39,852

Note: Wider Opportunities for Women Elder Economic Security Standard™ Index (Elder Index) measures how much income retired older adults require to meet their basic needs—without public or private assistance. The Elder Index measures basic expenses for elders age 65+ living in the community, not in institutions.

Useful Websites
County Chronic Disease Profile (Brevard)
Florida Housing Data Clearinghouse (Brevard)
Behavioral Risk Factors (BRFSS) (Brevard)





2013 Florida County Profiles

¹ Total Minorities = (60+ Population) – (White Non-Hispanic 60+)

² OSS beds: Optional State Supplementation beds

³ ECC License: Extended Congregate Care License

⁴ LMH License: Limited Mental Health License

⁵ LNS License: Limited Nursing Services License

⁶ With One Type of Disability: 60+ people who have only one type of disability

⁷ Probable Alzheimer's Cases = (65-74 Population x 0.0136) + (75-84 Population x 0.1822) + (85+ Population x 0.4098)

⁸ Annual expenses include: housing, including utilities, taxes, insurance; food; transportation; health care, based on good health; and miscellaneous.

Sources

- Population: Florida Population by County, Age, Race, Ethnicity and Gender provided by Florida Legislature, Office of Economic and Demographic Research
- Financial Status & Living Situation: Department of Elder Affairs calculations based on Florida Population data and 2007-2011 American Community Survey
- Medically Underserved Population (Data as of 7/18/2014): Florida Department of Health and U.S. Department of Health and Human Services
- Grandparents: Department of Elder Affairs calculations based on Florida Population data and 2007-2011 American Community Survey, Special Tabulation on Aging
- Skilled Nursing Facility Utilization, Adult Day Care, Adult Family Care Home, Ambulatory Surgical Centers, Assisted Living Facilities, Home Health Agencies, Homemakers & Companion Service Companies, Hospitals: Florida Agency for Health Care Administration
- Rural Designation: Based on the definition of Rural Designation by Rural Economic Development Initiative
- Medical Professionals: Florida Department of Health
- Driver's License: Florida Department of Highway Safety & Motor Vehicles
- Food Stamps: Florida Department of Children and Families
- Registered Voters (Data as of 1/31/2014) : Florida Department of State
- Households with Cost Burden Above 30% and income below 50% Area Median Income: The Shimberg Center for Housing Studies
- Median Household Incomes: U.S. Census Bureau: State and County QuickFacts
- Medicaid & Medicare Eligibility and Medicaid Eligibility: Florida Agency for Health Care Administration
- Veterans Demographics: Florida Department of Veterans' Affairs
- Disability Status: Department of Elder Affairs calculations based on Florida Population data and 2009-2011 American Community Survey Data
- Probable Alzheimer's Cases: Department of Elder Affairs calculations based on Florida Population data and Alzheimer's by Age in 2011 Alzheimer's Disease Facts and Figures report at http://www.alz.org/documents_custom/Facts_2011/ALZ_FL.pdf?type=interior_map&facts=undefined&facts=facts
- English Proficiency: Department of Elder Affairs calculations based on Florida Population data and 2007-2011 American Community Survey, Special Tabulation on Aging
- Cost of Living (Data as of 7/18/2014): Wider Opportunities for Women Elder Economic Security Standard™ Index (Elder Index) at <http://www.basiceconomicsecurity.org/EI/>