



# 2013 Florida County Profiles

## Bay

Population by Age Category		
All Ages	169,866	100.0%
Under 60	133,402	78.5%
60+	36,464	21.5%
65+	26,275	15.5%
70+	17,834	10.5%
75+	11,497	6.8%
80+	6,785	4.0%
85+	3,162	1.9%

Population by Race (60+)		
White	33,090	90.7%
Non-White	3,447	9.5%
Black	2,572	7.1%
Other Minorities	875	2.4%

Population by Ethnicity (60+)		
Total Hispanic	619	1.7%
White	542	1.5%
Non-White	77	0.2%
Total Non-Hispanic	35,845	98.3%
Total Minorities <sup>1</sup>	3,916	10.7%

Population by Gender (60+)		
Population 60+	36,464	21.5%
Male	16,811	46.1%
Female	19,653	53.9%

Financial Status (60+, % 60+)		
Below Poverty Guideline	3,259	8.9%
Below 125% of Poverty Guideline	4,627	12.7%
Minorities Below Poverty Guideline	701	1.9%
Minorities Below 125% of Poverty Guideline	924	2.5%

Medically Underserved (65+)		
Total Medically Underserved	16,557	
Medically Underserved Populations - Living in Areas Defined as Having Medically Underserved Populations	0	
Medically Underserved Areas - Living in Medically Underserved Areas	16,557	

Living Situation (60+)		
Living Alone	9,168	
Male	2,766	
Female	6,402	

Grandparents (60+)	
Total 60+ Living With Own Grandchildren (Under Age 18)	1,283
Grandparent Responsible for Own Grandchildren (Under Age 18)	634
Grandparent Not Responsible for Own Grandchildren (Under Age 18)	650
60+ Not Living With Own Grandchildren (Under Age 18)	34,298

Skilled Nursing Facility Utilization	
SNF Beds	974
Community Beds	854
Sheltered Beds	0
Veterans Administration Beds	120
Other Beds	0
SNFs With Beds	10
Community Beds	9
Sheltered Beds	0
Veterans Administration Beds	1
Other Beds	0
SNFs With Community Beds	9
Community Bed Days	311,710
Community Patient Days	282,700
Medicaid Patient Days	180,104
Occupancy Rate	90.7%
Percent Medicaid	63.7%

Adult Day Care	
Facilities	0
Capacity	0

Adult Family Care Homes	
Homes	1
Beds	5

Home Health Agencies	
Agencies	14
Medicaid Certified Agencies	6
Medicare Certified Agencies	8

Homemaker & Companion Service Companies	
Companies	4

Ambulatory Surgical Centers	
Facilities	6
Operating Rooms	14
Recovery Beds	51



# 2013 Florida County Profiles

## Bay (Continued)

Rural Designation	
Rural (Yes/No)	NO

Assisted Living Facilities	
Total Beds	453
OSS Beds <sup>2</sup>	196
Non-OSS Beds	257
Total Facilities	9
Facilities With ECC License <sup>3</sup>	1
Facilities With LMH License <sup>4</sup>	3
Facilities With LNS License <sup>5</sup>	1

Hospitals	
Hospitals	5
Hospitals With Skilled Nursing Units	0
Hospital Beds	694
Skilled Nursing Unit Beds	0

Medical Professionals	
Medical Doctors	
Licensed	363
Limited License	1
Critical Need Area License	6
Restricted	0
Medical Faculty Certificate	0
Public Health Certificate	0
Specialties	
Licensed Podiatric Physicians	10
Licensed Osteopathic Physicians	25
Licensed Chiropractic Physicians	27
Registered Nurses	
Licensed Registered Nurses	2,232

Driver's License	
Drivers With Florida Driver's License - All Ages	140,826
Drivers With Florida Driver's License - Age 60+	36,247
Percent of Drivers With Florida Driver's License - Age 60+	25.7%

Food Stamps (60+)	
Participants (60+)	2,062
Potentially Eligible	4,627
Food Stamp Participation Rate (60+)	44.6%

Registered Voters	
Registered to Vote in Florida - All Ages	108,465
Registered to Vote in Florida - Age 60+	32,301
Percent of Population Registered to Vote in Florida - Age 60+	29.8%

Households With Cost Burden Above 30% and Income Below 50% Area Median Income (65+) (2010)	
Elder Households	17,736
Percent of All Households	17.8%

Median Household Income (All Ages)	
2008-2012	\$47,364

Medicaid & Medicare Eligibility	
Medicaid Eligible - All Ages	33,788
Medicaid Eligible - 60+	3,961
Dual Eligible - All Ages	6,135
Dual Eligible - 60+	3,522

Veterans	
Total	16,983
Age 45-64	9,217
Age 65-84	6,682
Age 85+	1,084

Disability Status (60+)	
With One Type of Disability <sup>6</sup>	5,713
Hearing	5,382
Vision	2,193
Cognitive	3,525
Ambulatory	8,263
Self-Care	2,897
Independent Living	3,899
With Two or More Disabilities	6,780
With No Disabilities	24,405
Probable Alzheimer's Cases <sup>7</sup>	3,016

English Proficiency (60+)	
With Limited English Proficiency	282

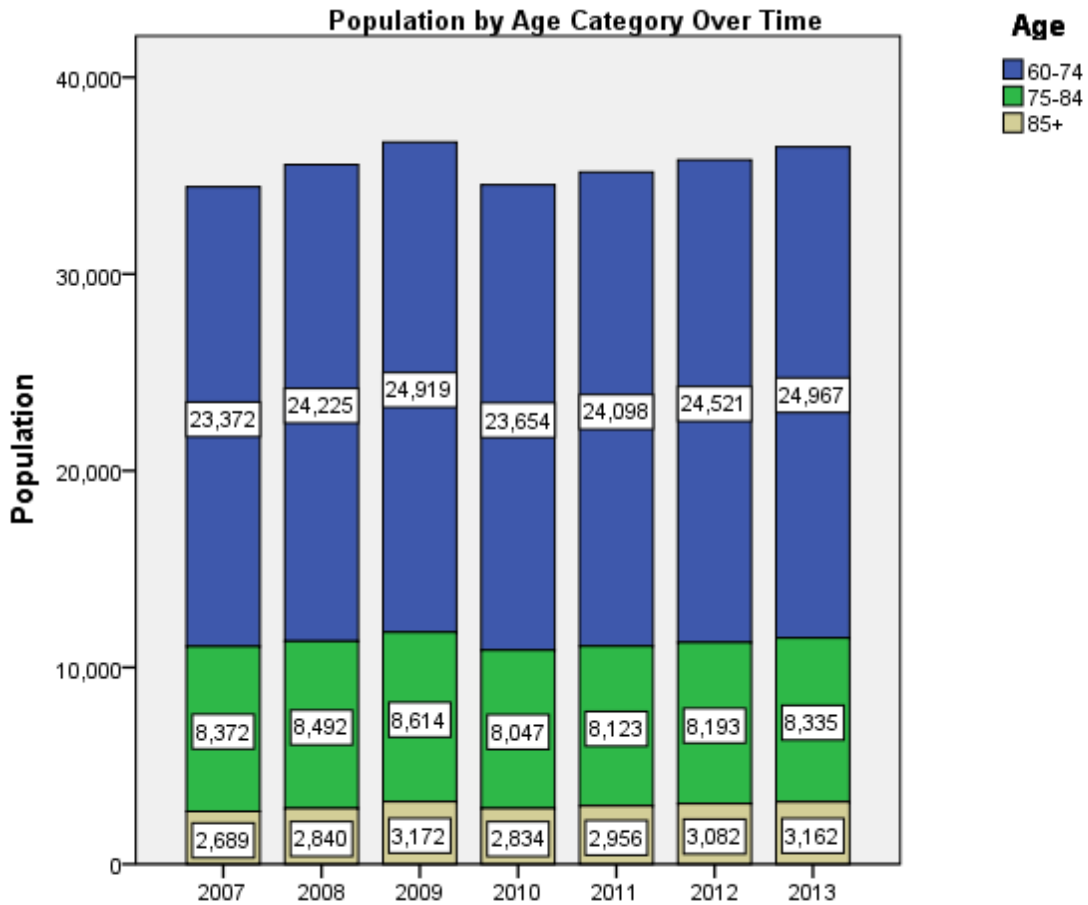
# 2013 Florida County Profiles

## Bay (Continued)

Cost of Living	
	Annual Expenses <sup>8</sup>
<b>Single Elders</b>	
Owner without Mortgage	\$20,208
Renter, one bedroom	\$24,312
Owner with Mortgage	\$28,980
<b>Elder Couple</b>	
Owner without Mortgage	\$32,628
Renter, one bedroom	\$36,732
Owner with Mortgage	\$41,400

Note: Wider Opportunities for Women Elder Economic Security Standard™ Index (Elder Index) measures how much income retired older adults require to meet their basic needs—without public or private assistance. The Elder Index measures basic expenses for elders age 65+ living in the community, not in institutions.

Useful Websites
<a href="#">County Chronic Disease Profile (Bay)</a>
<a href="#">Florida Housing Data Clearinghouse (Bay)</a>
<a href="#">Behavioral Risk Factors (BRFSS) (Bay)</a>





# 2013 Florida County Profiles

---

<sup>1</sup> Total Minorities = (60+ Population) – (White Non-Hispanic 60+)

<sup>2</sup> OSS beds: Optional State Supplementation beds

<sup>3</sup> ECC License: Extended Congregate Care License

<sup>4</sup> LMH License: Limited Mental Health License

<sup>5</sup> LNS License: Limited Nursing Services License

<sup>6</sup> With One Type of Disability: 60+ people who have only one type of disability

<sup>7</sup> Probable Alzheimer's Cases = (65-74 Population x 0.0136) + (75-84 Population x 0.1822) + (85+ Population x 0.4098)

<sup>8</sup> Annual expenses include: housing, including utilities, taxes, insurance; food; transportation; health care, based on good health; and miscellaneous.

## Sources

- Population: Florida Population by County, Age, Race, Ethnicity and Gender provided by Florida Legislature, Office of Economic and Demographic Research
- Financial Status & Living Situation: Department of Elder Affairs calculations based on Florida Population data and 2007-2011 American Community Survey
- Medically Underserved Population (Data as of 7/18/2014): Florida Department of Health and U.S. Department of Health and Human Services
- Grandparents: Department of Elder Affairs calculations based on Florida Population data and 2007-2011 American Community Survey, Special Tabulation on Aging
- Skilled Nursing Facility Utilization, Adult Day Care, Adult Family Care Home, Ambulatory Surgical Centers, Assisted Living Facilities, Home Health Agencies, Homemakers & Companion Service Companies, Hospitals: Florida Agency for Health Care Administration
- Rural Designation: Based on the definition of Rural Designation by Rural Economic Development Initiative
- Medical Professionals: Florida Department of Health
- Driver's License: Florida Department of Highway Safety & Motor Vehicles
- Food Stamps: Florida Department of Children and Families
- Registered Voters (Data as of 1/31/2014) : Florida Department of State
- Households with Cost Burden Above 30% and income below 50% Area Median Income: The Shimberg Center for Housing Studies
- Median Household Incomes: U.S. Census Bureau: State and County QuickFacts
- Medicaid & Medicare Eligibility and Medicaid Eligibility: Florida Agency for Health Care Administration
- Veterans Demographics: Florida Department of Veterans' Affairs
- Disability Status: Department of Elder Affairs calculations based on Florida Population data and 2009-2011 American Community Survey Data
- Probable Alzheimer's Cases: Department of Elder Affairs calculations based on Florida Population data and Alzheimer's by Age in 2011 Alzheimer's Disease Facts and Figures report at [http://www.alz.org/documents\\_custom/Facts\\_2011/ALZ\\_FL.pdf?type=interior\\_map&facts=undefined&facts=facts](http://www.alz.org/documents_custom/Facts_2011/ALZ_FL.pdf?type=interior_map&facts=undefined&facts=facts)
- English Proficiency: Department of Elder Affairs calculations based on Florida Population data and 2007-2011 American Community Survey, Special Tabulation on Aging
- Cost of Living (Data as of 7/18/2014): Wider Opportunities for Women Elder Economic Security Standard™ Index (Elder Index) at <http://www.basiceconomicsecurity.org/EI/>