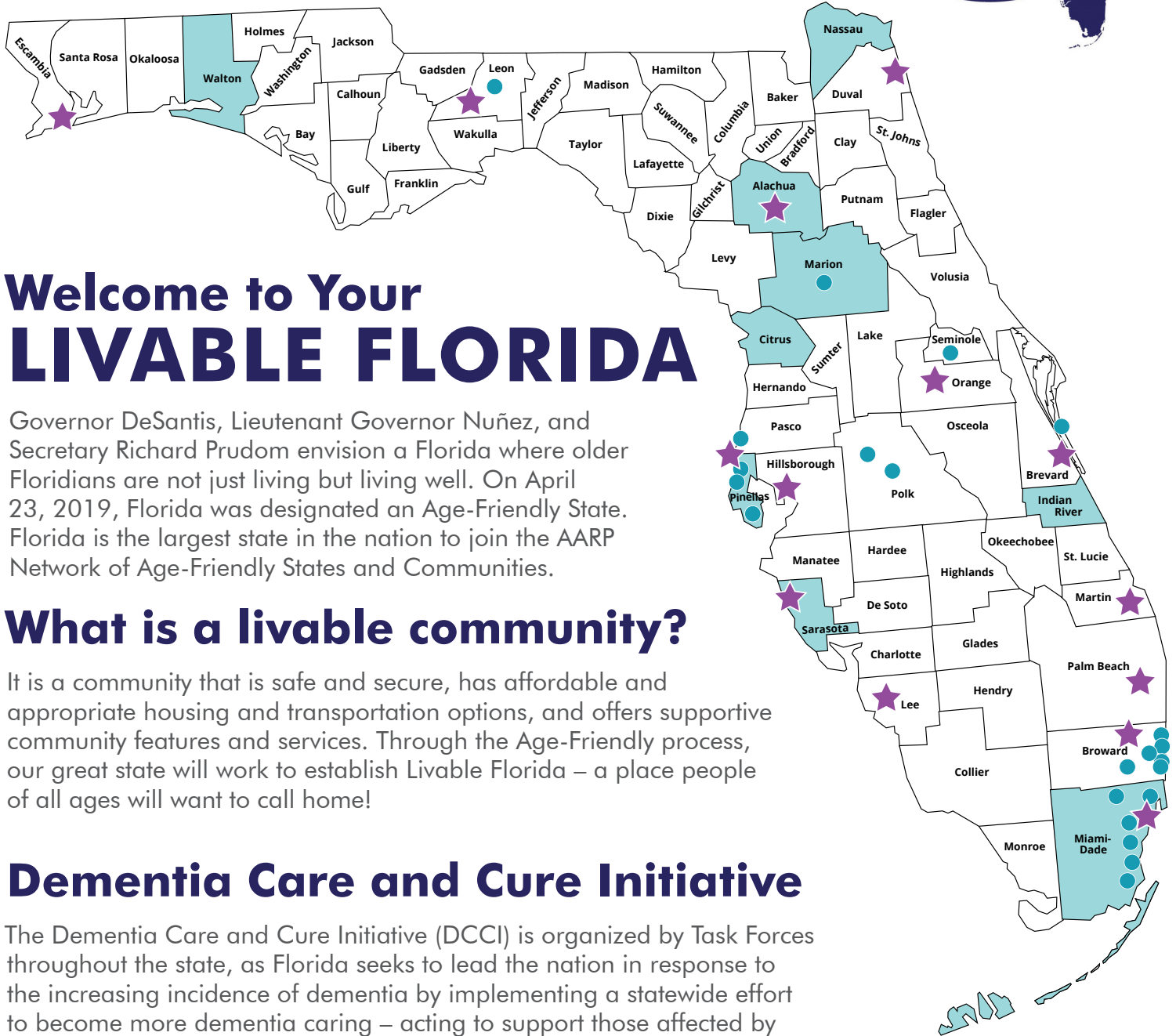
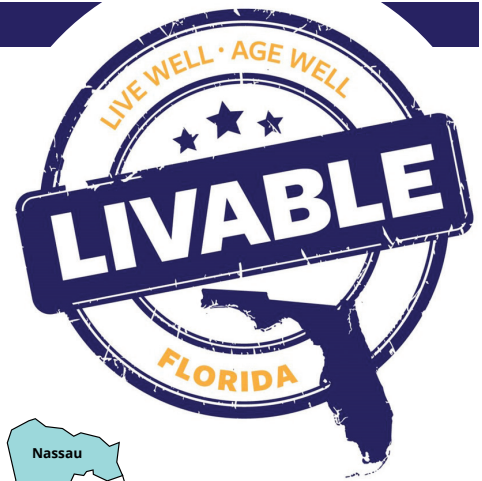


MAP KEY

Age-Friendly County

Age-Friendly City

DCCI Task Force



Welcome to Your LIVABLE FLORIDA

Governor DeSantis, Lieutenant Governor Nuñez, and Secretary Richard Prudom envision a Florida where older Floridians are not just living but living well. On April 23, 2019, Florida was designated an Age-Friendly State. Florida is the largest state in the nation to join the AARP Network of Age-Friendly States and Communities.

What is a livable community?

It is a community that is safe and secure, has affordable and appropriate housing and transportation options, and offers supportive community features and services. Through the Age-Friendly process, our great state will work to establish Livable Florida – a place people of all ages will want to call home!

Dementia Care and Cure Initiative

The Dementia Care and Cure Initiative (DCCI) is organized by Task Forces throughout the state, as Florida seeks to lead the nation in response to the increasing incidence of dementia by implementing a statewide effort to become more dementia caring – acting to support those affected by dementia, bettering communities and the state overall.



For More Information

To sign up for the Livable Florida newsletter, please email us at: LivableFL@elderaffairs.org.

To share your ideas for a Livable Florida, please visit: elderaffairs.org/doea/contact_form_livable.html.



Age-Friendly Communities

Shading denotes a county-wide designation.

Alachua County

Brevard County

Satellite Beach

Broward County

Fort Lauderdale

Hallandale Beach

Hollywood

Pembroke Pines

Pompano Beach

Wilton Manors

Leon County

Tallahassee

Pasco County

New Port Richey

Polk County

Winter Haven

Lakeland

Citrus County

Indian River County

Pinellas County

Dunedin

Clearwater

St. Petersburg

Indian River County

Marion County

Ocala

Miami-Dade County

Miami

Miami Lakes

Miami Shores

Coral Gables

Cutler Bay

Palmetto Bay

Pinecrest

Orange County

Orlando

Nassau County

Sarasota County

Seminole County

Longwood

Walton County

